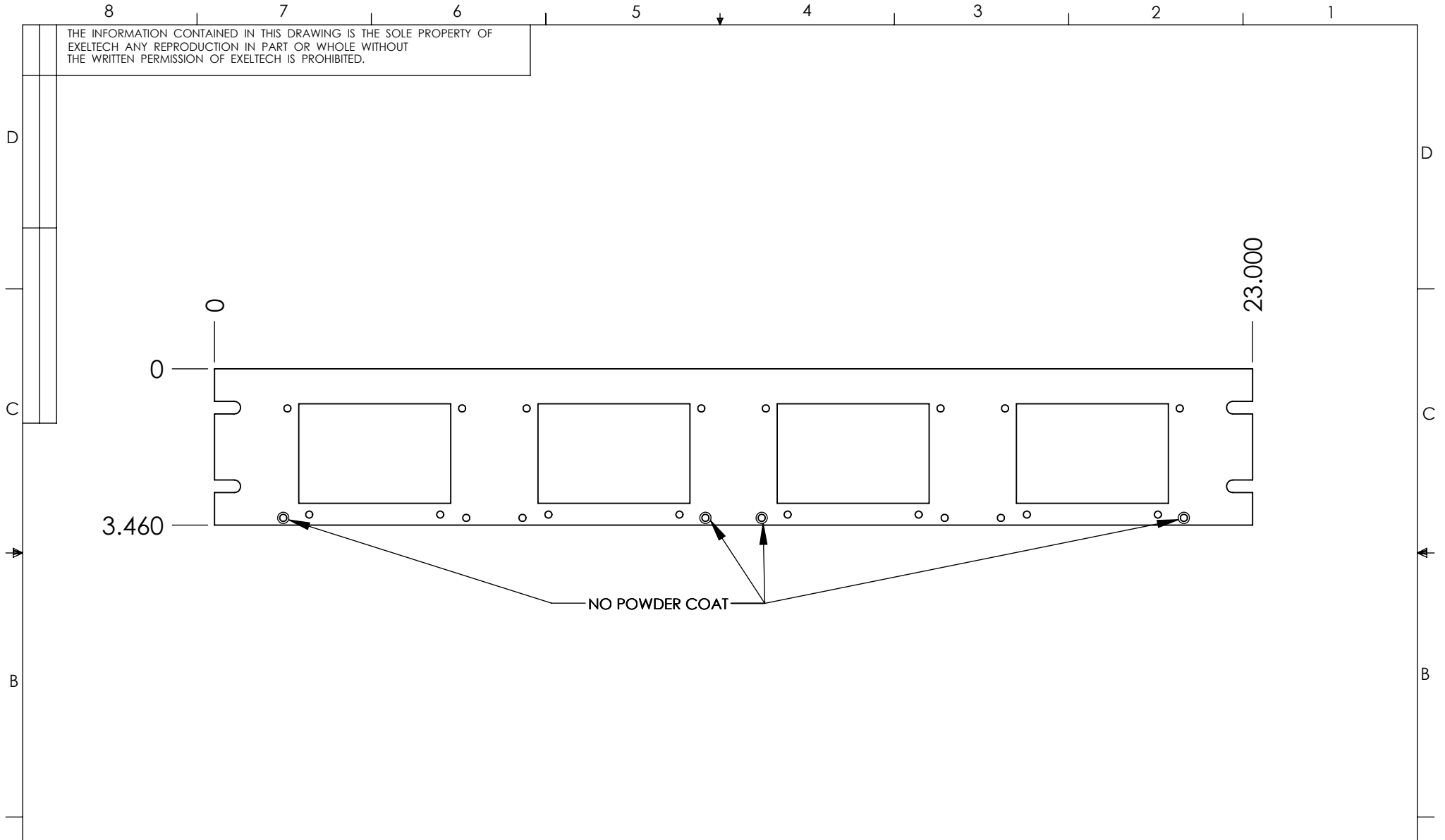


THE INFORMATION CONTAINED IN THIS DRAWING IS THE SOLE PROPERTY OF EXELTECH ANY REPRODUCTION IN PART OR WHOLE WITHOUT THE WRITTEN PERMISSION OF EXELTECH IS PROHIBITED.



Note: Powder Coat All
Sherwin Williams Black Text
LC20008
PTB2-70063-C50

NO POWDER COAT ON BACK OF
FACE PLATE TO MAINTAIN
ELECTRICAL GROUNDING
REQUIREMENT

HOLES	DESCRIPTION	QTY.	FOR PARTS LIST SEE D.B.A. B.O.M. LISTING		
			UNLESS OTHERWISE SPECIFIED DIMENSIONS ARE IN INCHES TOLERANCES ARE:		CAD GENERATED DRAWING, DO NOT MANUALLY UPDATE
			DECIMALS: .XXX +/- .010 .XX +/- .020	APPROVALS	
			FRACTIONS: +/- 1/32	DATE	DRAWN RM 4/2/14
			ANGLES: +/- 1	CHECKED	
			MATERIAL	RESP ENG	PWD 23" XP FACE PLATE FOR RACK MNT
			FINISH SEE NOTE	MFG ENG	
			DO NOT SCALE DRAWING	QUAL ENG	SIZE A
					DWG. NO. 020-00130-401
					SCALE
					CAD FILE:
					SHEET
					OF

EXELTECH
7317 JACK NEWELL BLVD N
FT. WORTH, TX 76118-7100
**PWD 23" XP FACE
PLATE FOR RACK MNT**
DWG. NO. **020-00130-401**