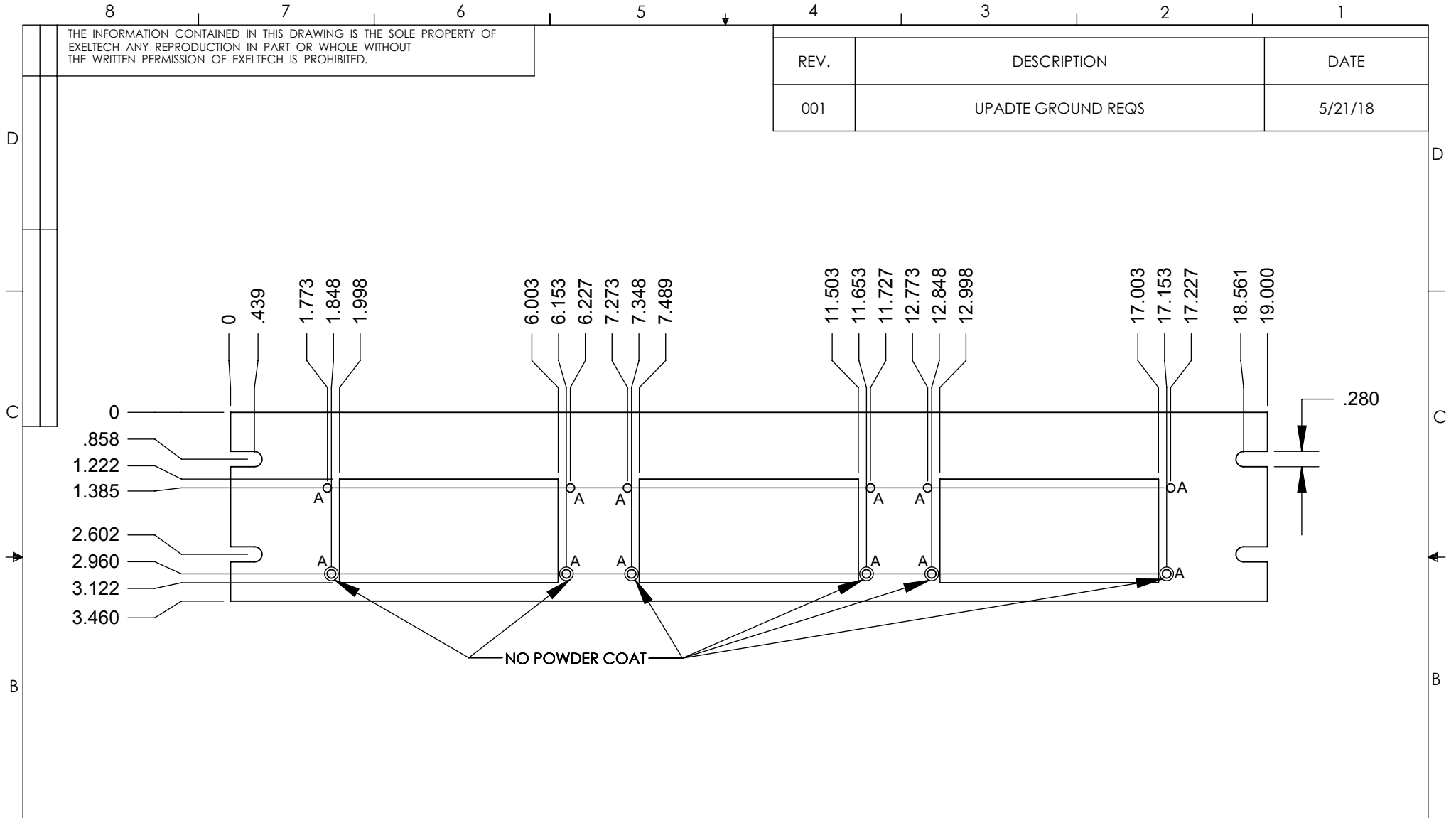


THE INFORMATION CONTAINED IN THIS DRAWING IS THE SOLE PROPERTY OF EXELTECH ANY REPRODUCTION IN PART OR WHOLE WITHOUT THE WRITTEN PERMISSION OF EXELTECH IS PROHIBITED.

REV.	DESCRIPTION	DATE
001	UPADTE GROUND REQS	5/21/18



NOTE:

- ALL INTERNAL CORNERS CAN HAVE A .063" RADIUS TO ALLOW FOR MILL OPERATION
- POWDER COAT ALL SHERWIN WILLIAMS LC 20008 BLACK TEXT PBT2-70063-C50
- NO POWDER COAT ON BACK OF FACE PLATE TO MAINTAIN ELECTRICAL GROUNDING REQUIREMENT

HOLES	DESCRIPTION	QTY.	FOR PARTS LIST SEE D.B.A. B.O.M. LISTING			
A	Ø .156"	12	UNLESS OTHERWISE SPECIFIED DIMENSIONS ARE IN INCHES		CAD GENERATED DRAWING, DO NOT MANUALLY UPDATE	
			TOLERANCES ARE:		APPROVALS	DATE
			FRACTIONS	DECIMALS	ANGLES	DRAWN LEM 01/27/08
			+1/32	.XX+/- .020	.XX X +/- .010	CHECKED
			MATERIAL .125" AL.		RESP ENG	
			FINISH SEE NOTE		MFG ENG	
			DO NOT SCALE DRAWING		QUAL ENG	
			SIZE A	DWG. NO. 020-00123-401		
			SCALE	CAD FILE:	SHEET OF	

A

A